

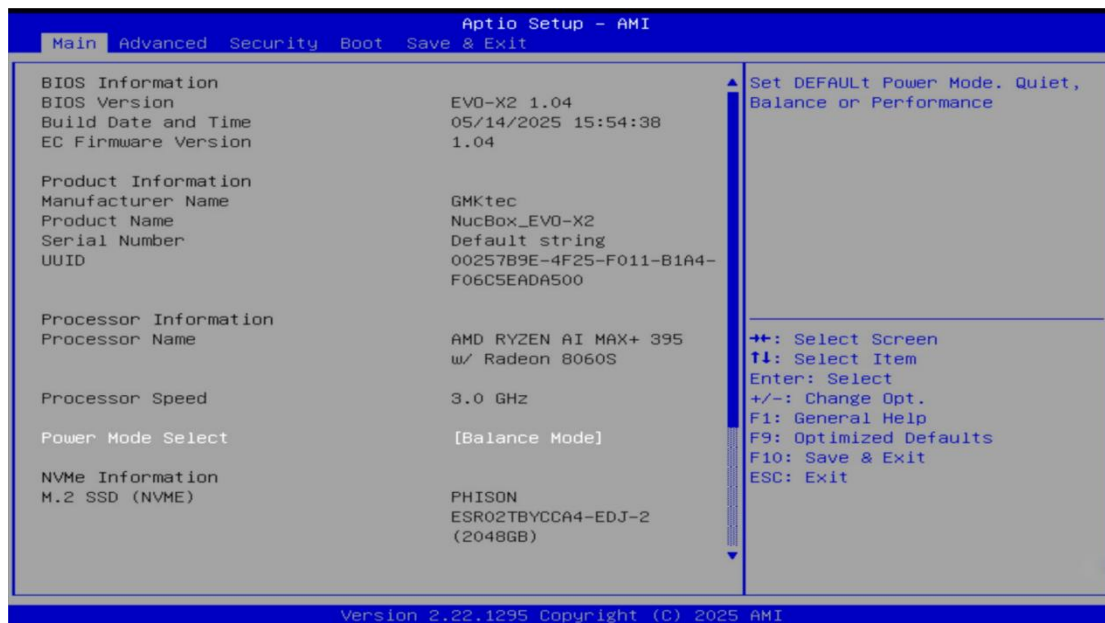
Operation Guide for Adjusting Fan Speed Settings of EVO-X2

Note: Method 1: Compatible with BIOS versions 1.04~1.11 and EC versions 1.04~1.08.

Method 2: Compatible with BIOS version 1.12 and EC versions 1.09 and above.

1. Enter the BIOS interface

Power off the EVO-X2 device and keep it connected to power. Briefly press the power button to turn it on, then continuously press the ESC key during startup to access the BIOS setup page. As shown below:

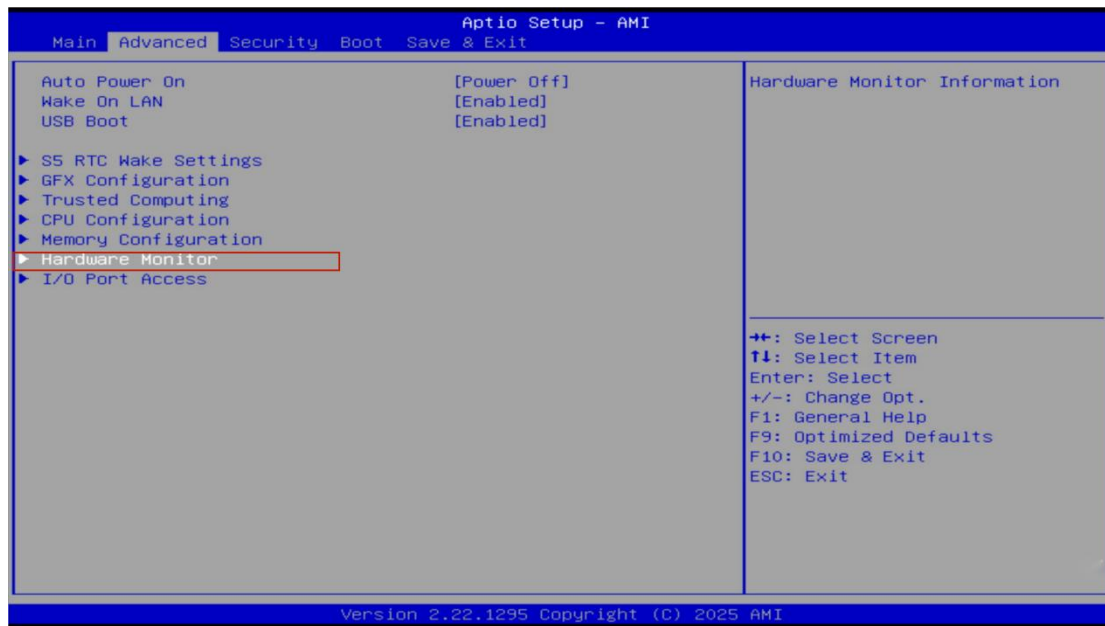


2. Enter the Advanced interface. Use the right arrow key on the keyboard to select the Advanced menu interface, as shown below:



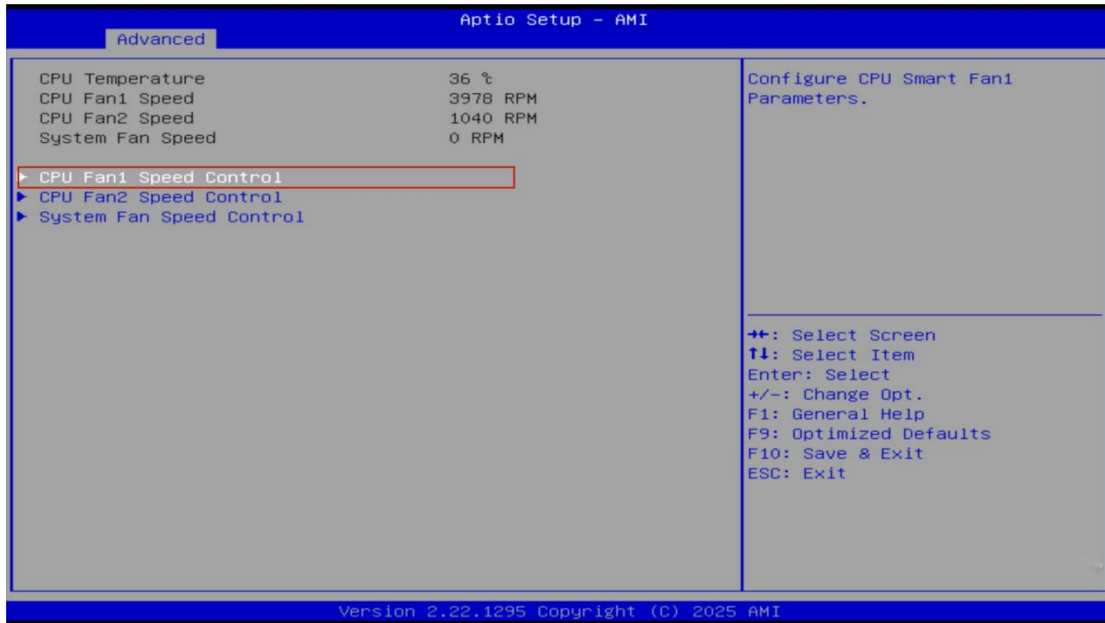
3. Select Hardware Monitor

Press the down arrow key to choose the Hardware Monitor option, then hit Enter. As shown below:



Method One:

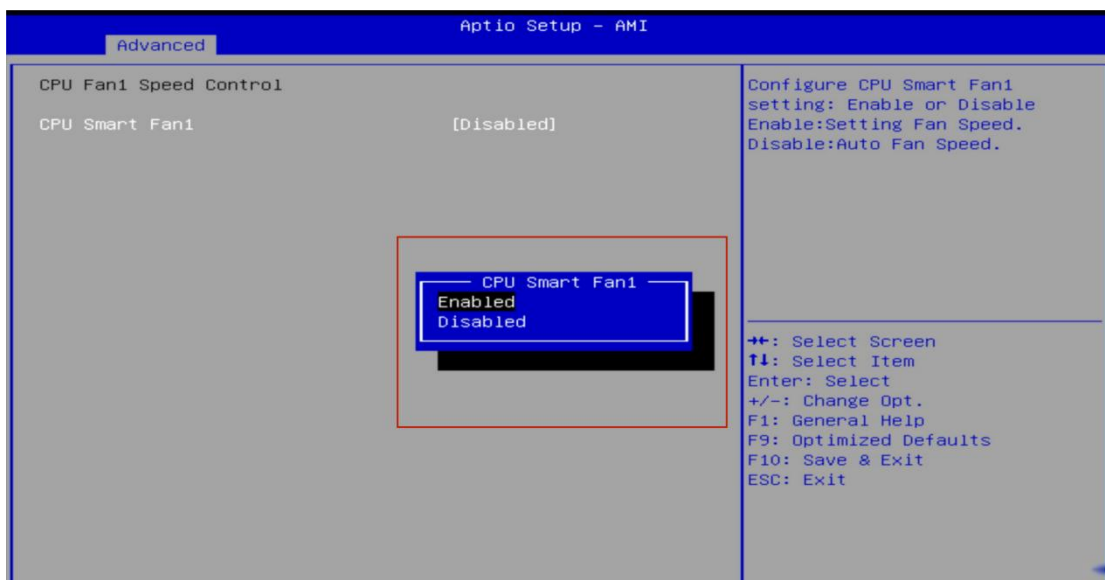
1. After entering the Hardware Monitor menu, you can view and adjust the current fan speed (including two CPU fans and one system fan). Select CPU Fan1 Speed Control and press Enter. As shown below.



2. Enable fixed fan speed

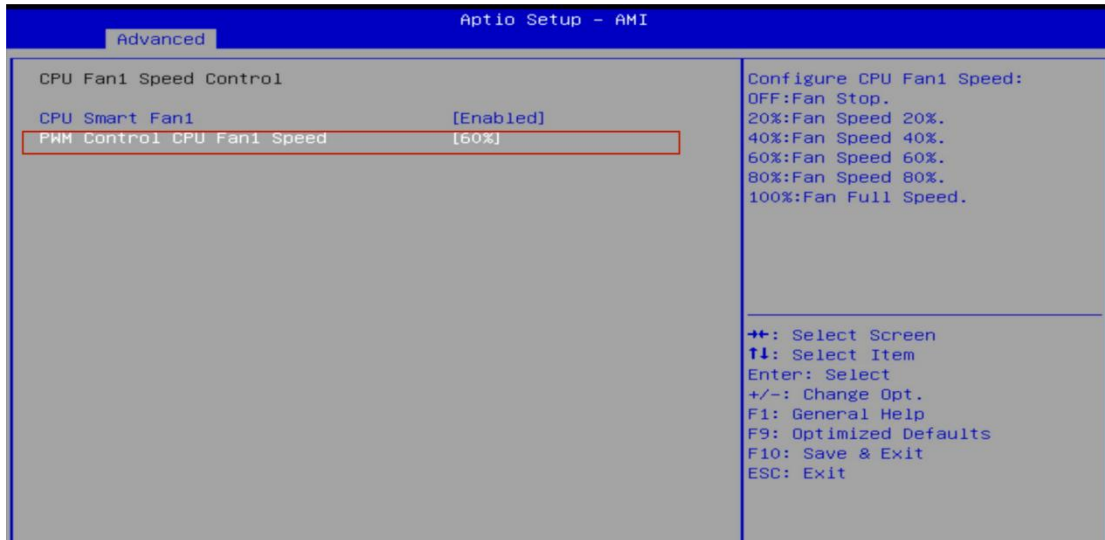
Select CPU Smart Fan1 and press Enter as shown below:

When set to Disabled, fan speed is controlled automatically by the system. When set to Enabled, fan speed runs at a fixed value. Do not adjust fixed fan speed arbitrarily, especially when the device is under high-load operation.



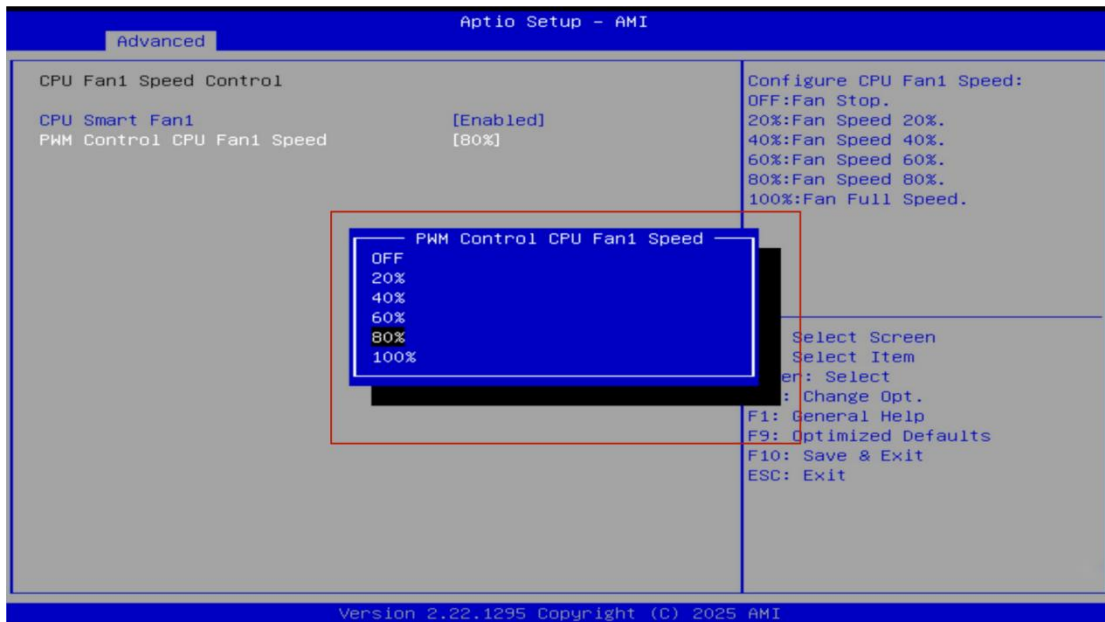
3. Select PWM Control CPU Fan1 Speed

Press the down arrow key to select this option, then press Enter. As shown below.



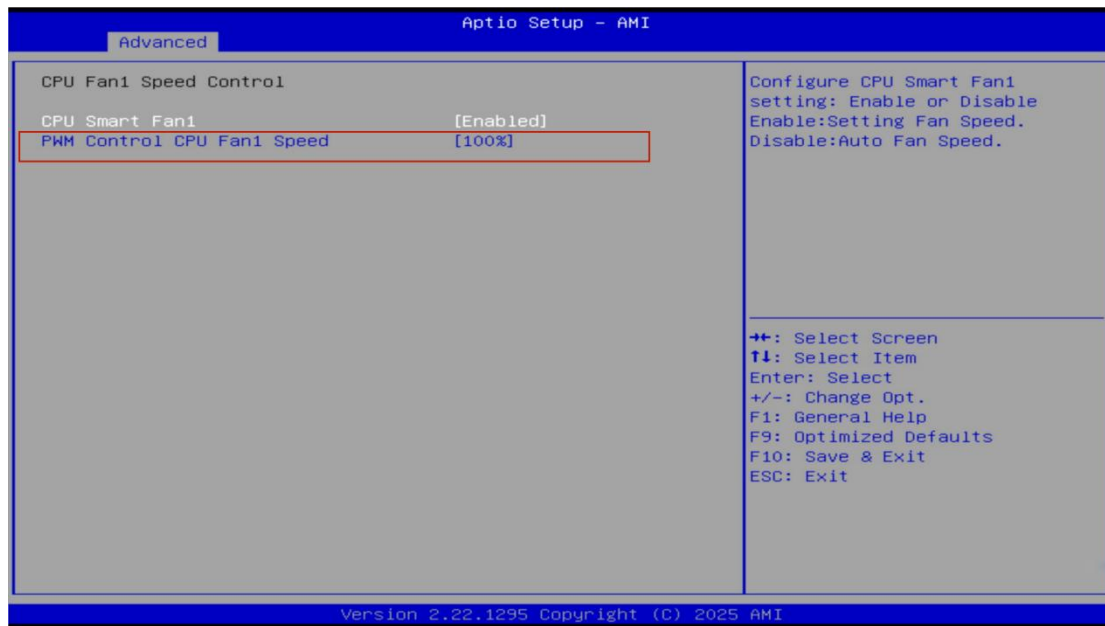
4. Adjust fixed fan speed

In the pop-up window, use the up and down arrow keys to switch the percentage of fixed fan speed. As shown below.



5. Adjust Fixed Fan Speed

Select your preferred fixed fan speed percentage and press Enter. As shown below.

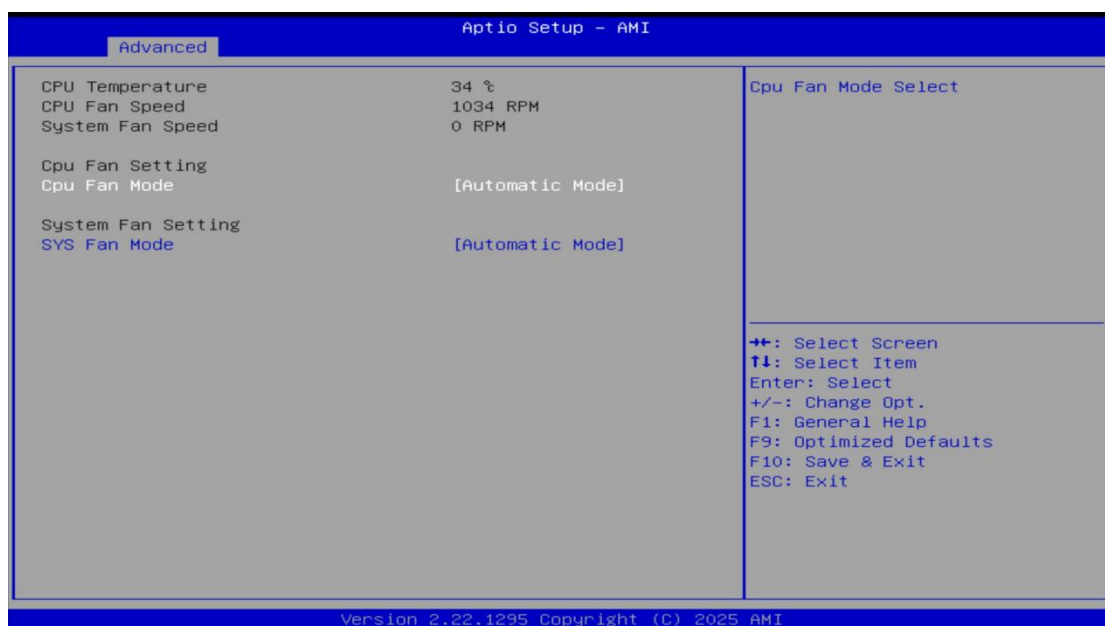


Method Two:

1. After entering the Hardware Monitor menu,

you can check and adjust current fan speeds (two CPU fans and one system fan). Select

CPU Fan Mode and press Enter. As shown below.



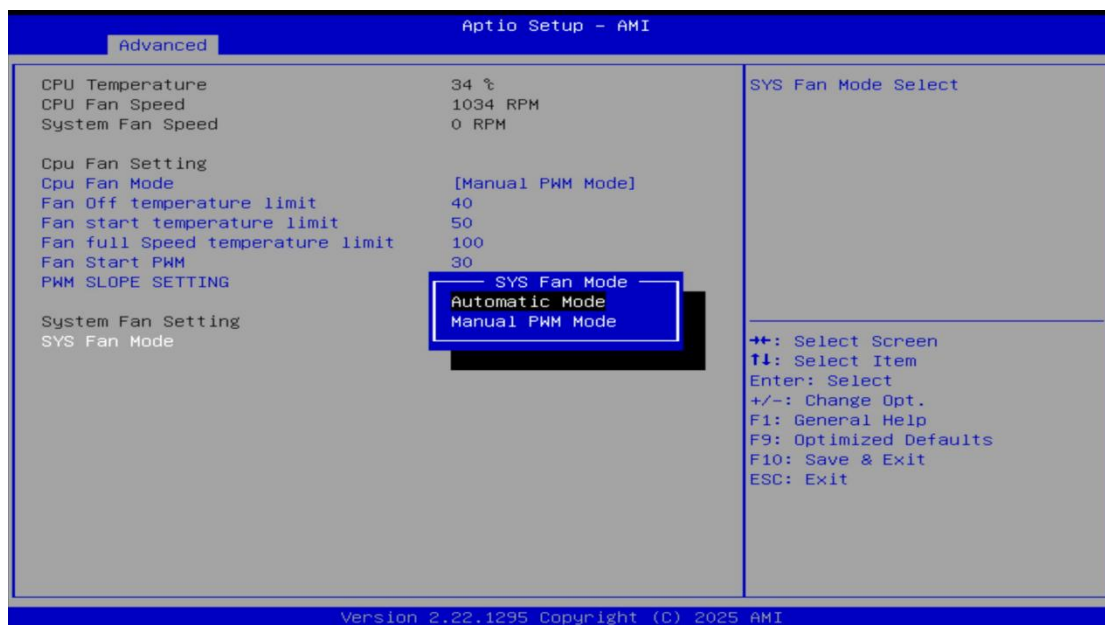
2. Press Enter to pop up the sub-setting menu. Use the down arrow key to switch the CPU Fan Mode options.

(Manual PWM Mode: manual fan speed adjustment; Automatic mode: automatic fan speed adjustment) As shown below.

Fan OFF temperature limit: Fan stop temperature
Fan Start temperature limit: Fan startup temperature
Fan Full Speed temperature limit: Fan full-speed operating temperature
Fan Start PWM: Initial duty cycle (set value × 100%)
PWM SLOPE SETTING:

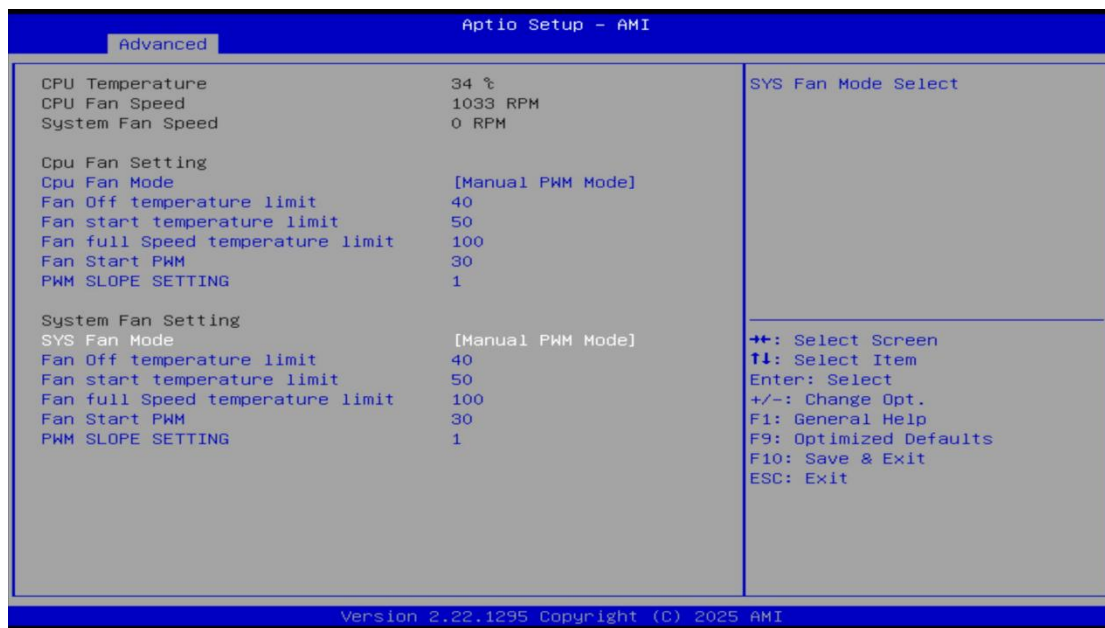
PWM slope setting

Note: Final fan speed = Maximum fan speed × PWM duty cycle
PWM Duty Cycle = [Initial PWM value + (Current device temperature - Fan start temperature) × PWM slope value] × 100%



2. Modify the value of Fan Start temperature limit

You can enter the value manually, or press Enter then use +/- keys to adjust it. This parameter sets the minimum starting temperature for full-speed operation. As shown below.

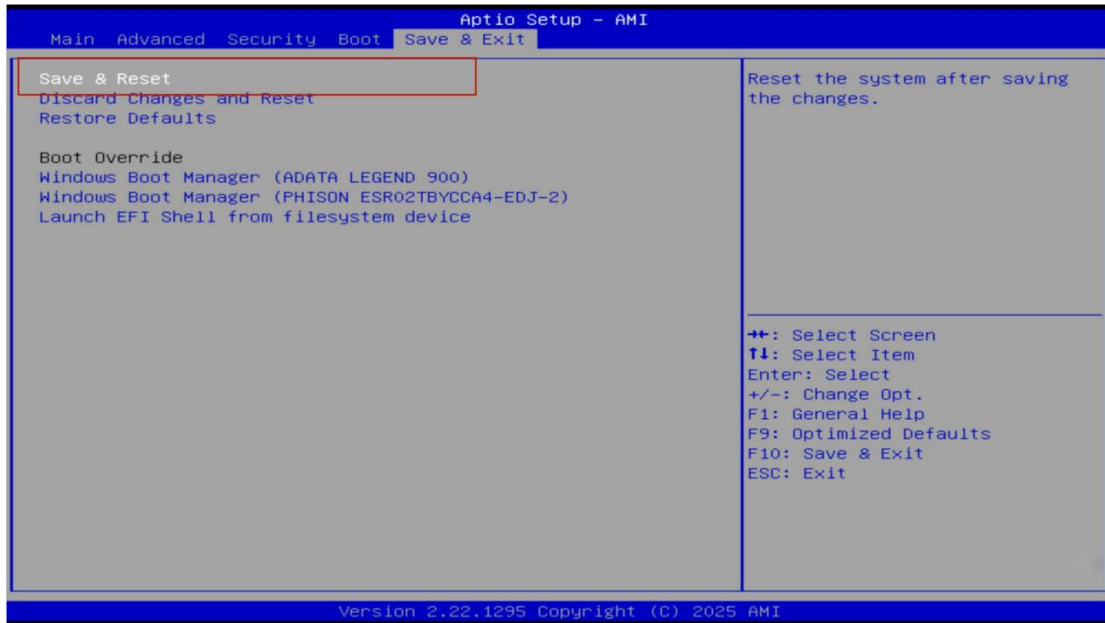


3. Modify **Fan Start PWM (Initial Duty Cycle, set value × 100%)** (Not recommended) Manually input values to adjust **Fan Start PWM**. The value stands for fan speed percentage: $\text{Max fan speed} \times (\text{set value} \times 100\%)$.

4. Save changes

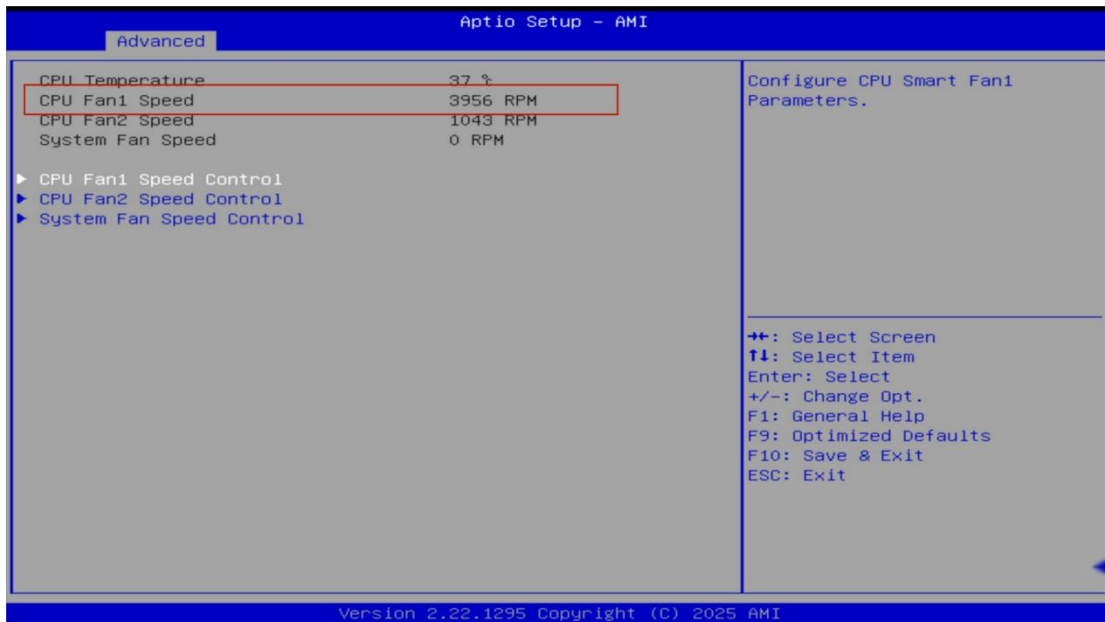
Press F10 and hit Enter, or use the right arrow key to switch to the Save & Exit page.

Select Save & Reset and press Enter to save settings and exit BIOS. As shown below.



5. Verify if fixed fan speed settings take effect

Press ESC to return to the Hardware Monitor page, and check whether the speeds of CPU Fan 1 and CPU Fan are modified successfully. As shown below.



The fan speed modification is completed successfully after finishing all above operations.

