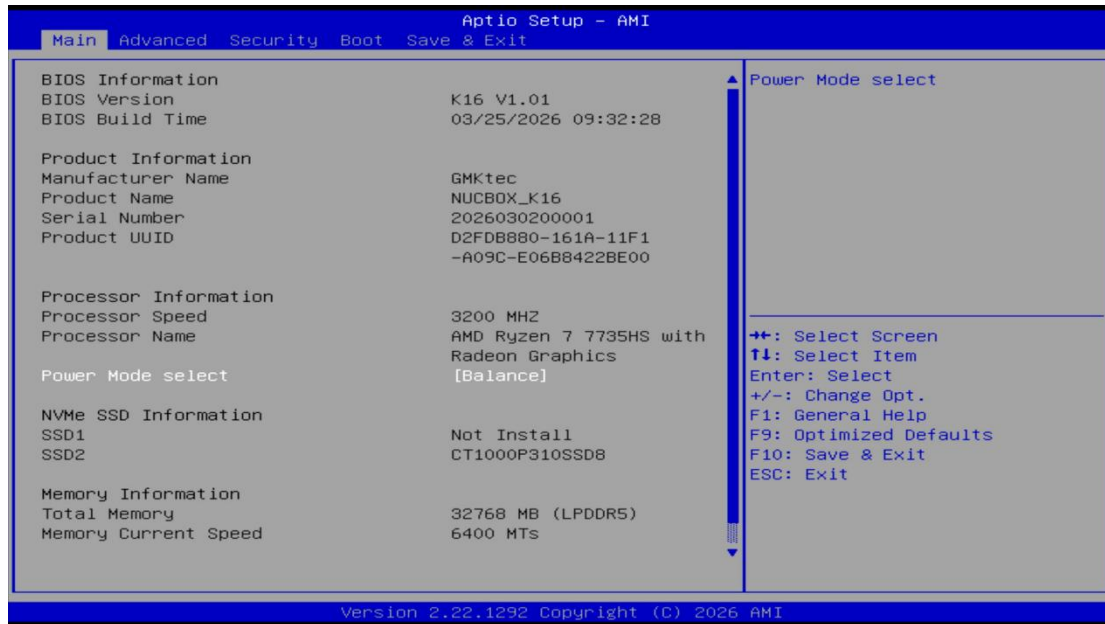


K16 Fan Settings Adjustment Guide

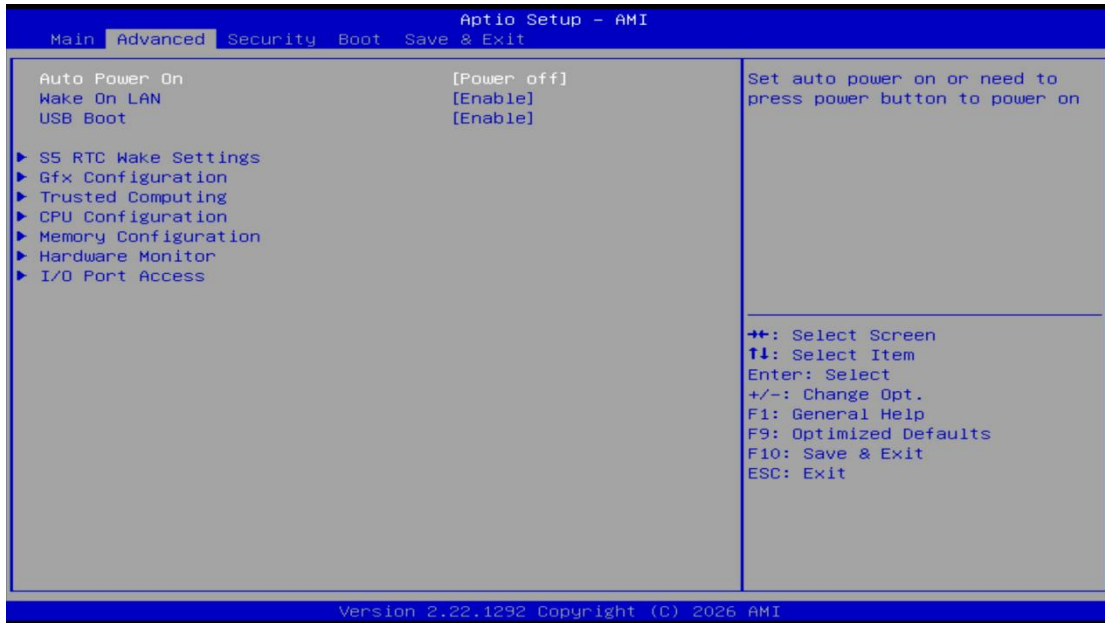
1. Enter the BIOS interface

The K16 device is powered off when connected to the power supply. Short press the power button of the device to turn it on. When it is turned on, press the ESC key continuously to enter the BIOS setting page. As shown below:



2. Enter the Advanced interface

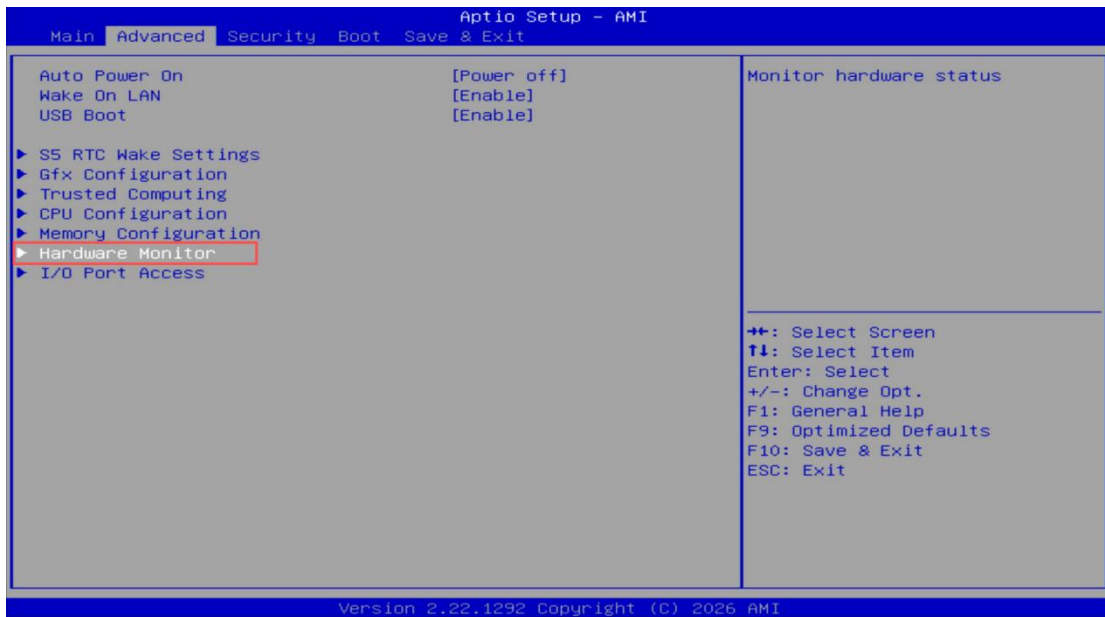
Use the arrow keys "→" on the keyboard to select the Advanced interface. As shown below:



3. Select the Hardware Monitor item

Use the direction key "↓" on the keyboard to select the Hardware Monitor item.

As shown below:



4. Set the CPU Fan Mode item

Press the Enter key to pop up the settings submenu. Then use the direction key "↓" on the keyboard to switch to the Manual PWM Mode option.

(Manual PWM Mode-Manual Settings、 Automatic Mode-Automatic Settings)。如下图:

As shown below:

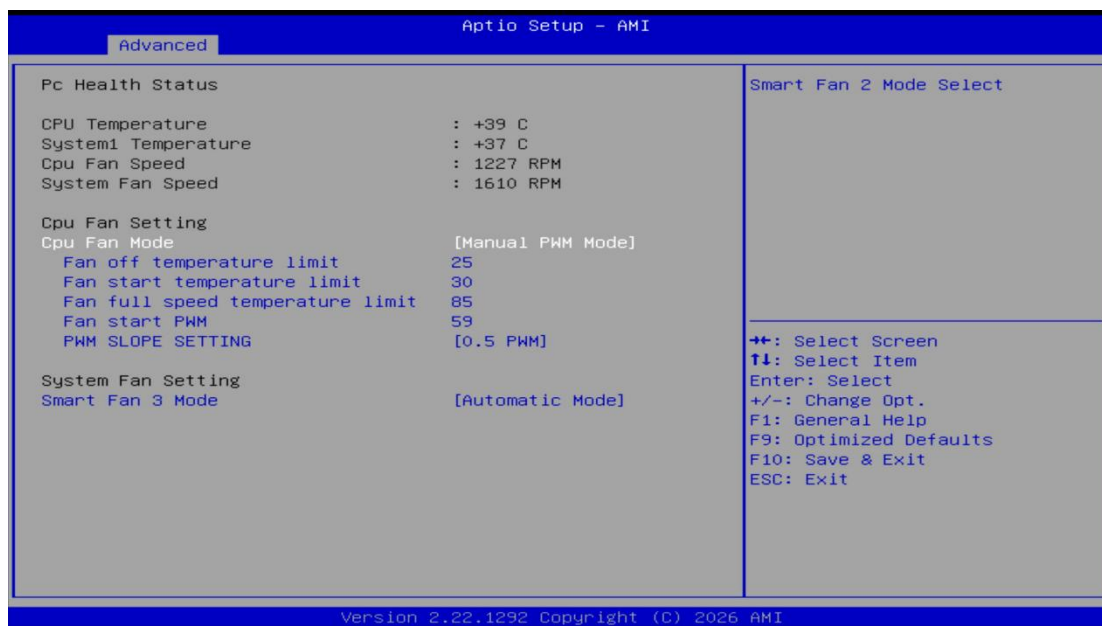
Fan Off Temperature Limit - Fan shutdown temperature limit;

Fan Start Temperature Limit - Fan startup temperature limit;

Fan Full Speed Temperature Limit - Fan full-speed operation temperature limit;

Fan Start PWM - Initial duty cycle (set value / 255 * 100%);

PWM Slope Setting - Fan speed ramp rate;



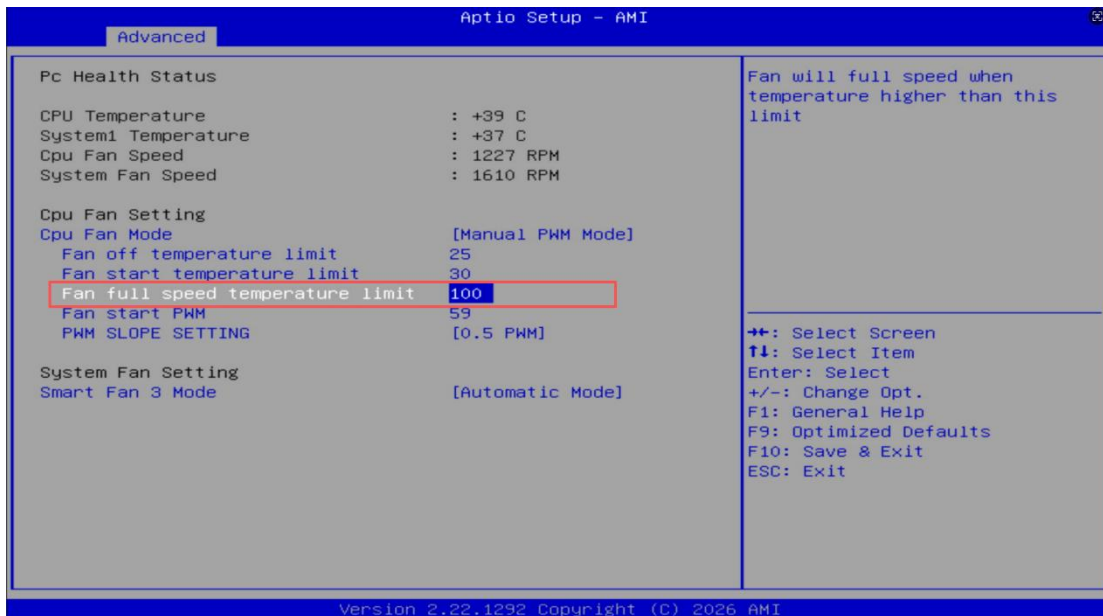
keyboard keys



6. Modify the value of Fan Speed temperature limit

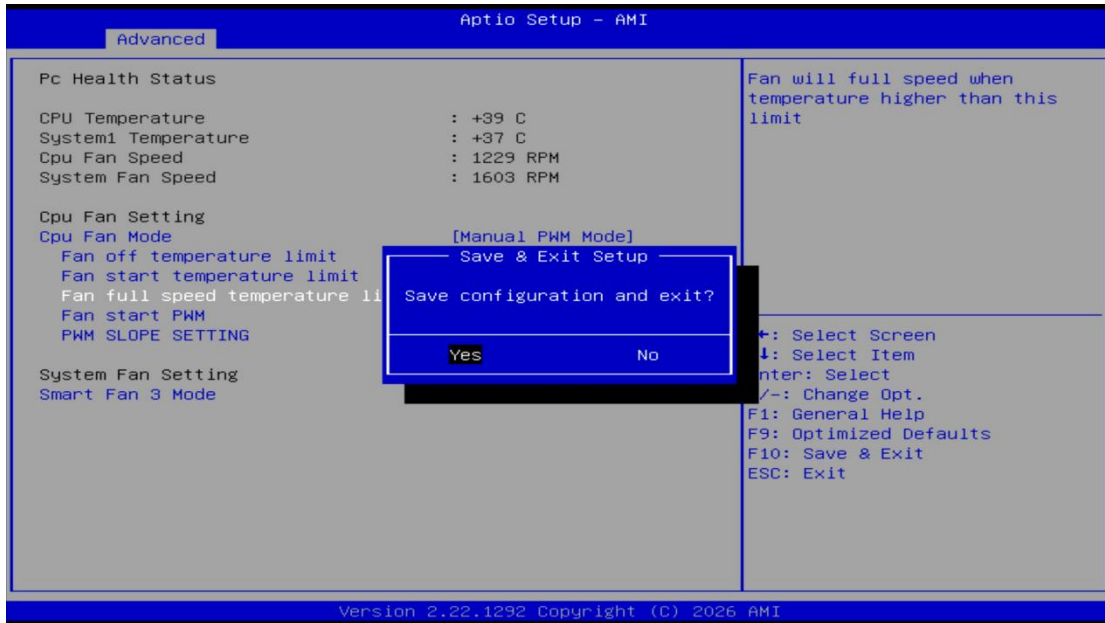
You can enter it manually or use "+/-" after pressing Enter to adjust the Fan Speed

temperature limit item. The value set by the Fan Speed temperature limit item is the minimum starting temperature for full speed operation. As shown below:



7. Save changes,

Press the keyboard key "F10" and click the Enter key to save and exit the BIOS interface. As shown below:



Complete the above operations to adjust the fan speed