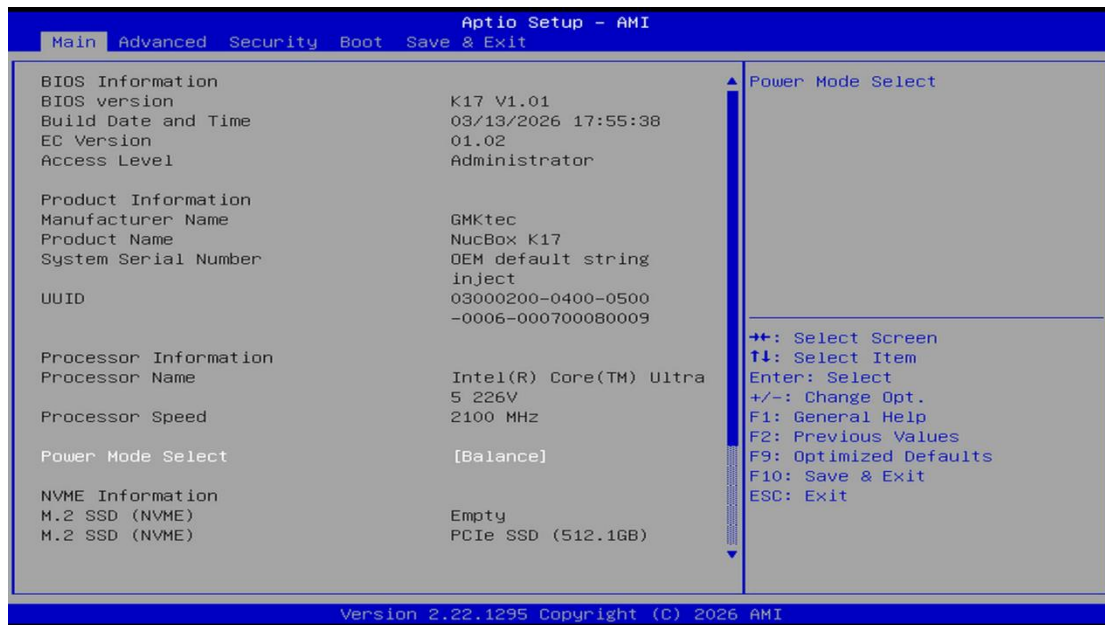


Operation Guide for Fan Settings Modification of K17

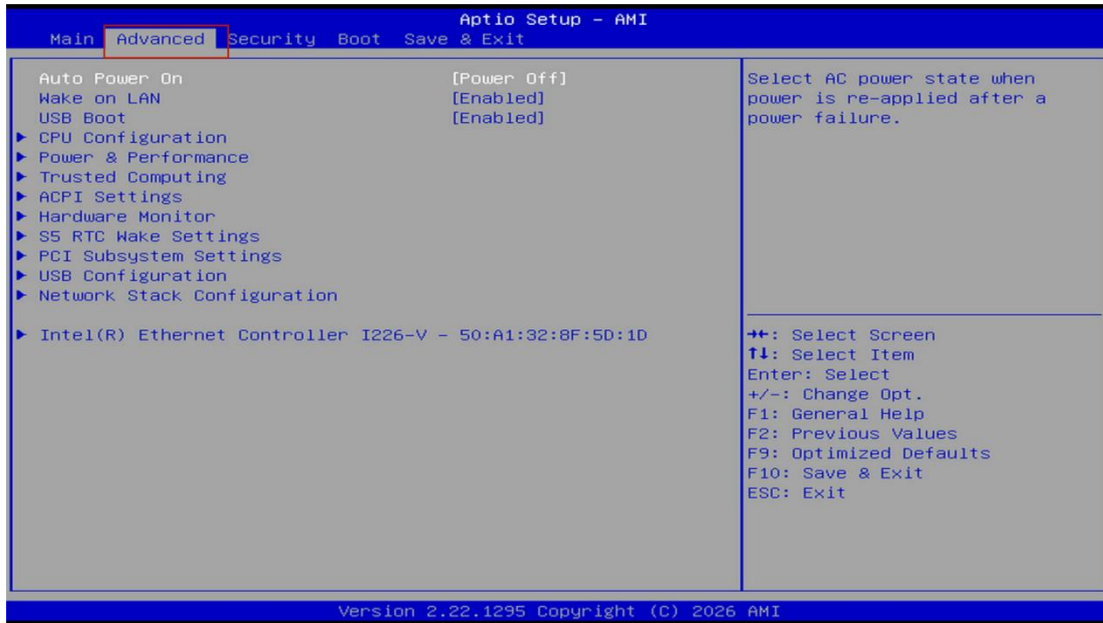
1. Enter the BIOS interface

With the K17 device powered off and connected to the power supply, briefly press the device power button to boot up. Continuously press the ESC key during startup to enter the BIOS setup page. As shown below:

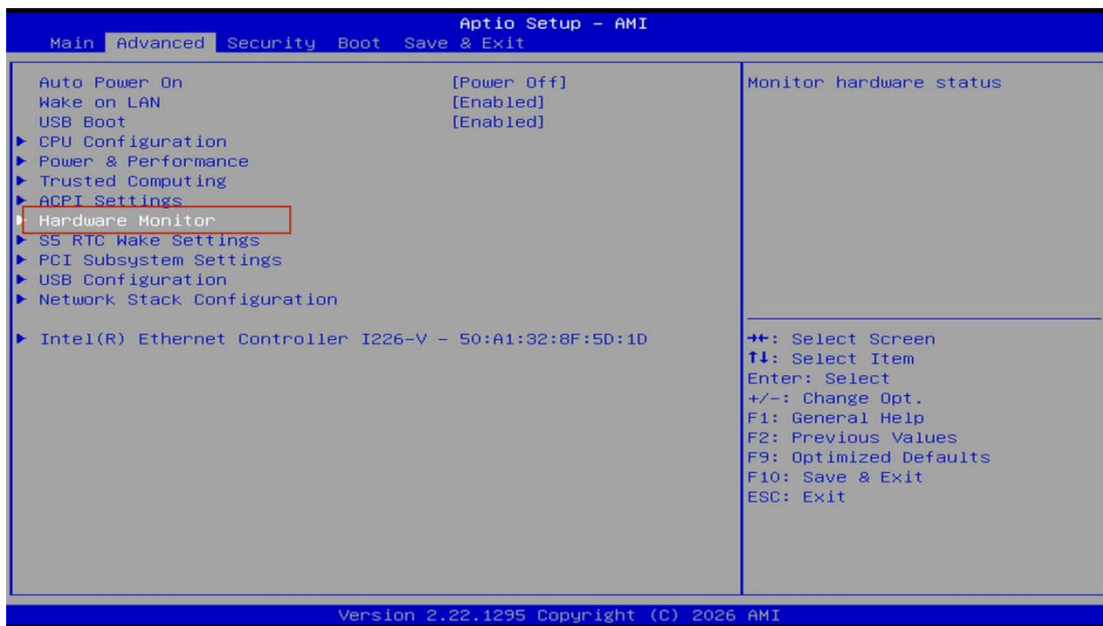


2. Navigate to the Advanced tab

Use the right arrow key "→" on the keyboard to select the Advanced tab. As shown below:



3. Select the Hardware Monitor item:



4. Configure the Smart Fan Function option

Press the Enter key to bring up the settings submenu. Then use the down arrow key "↓" on the keyboard to switch the Smart Fan 1 Mode option.

(Auto fan adjustment modes: Balance, Quiet, Performance; Manual fan adjustment mode: Manual). As shown below:

Fan off temperature limit: The temperature threshold for the fan to stop rotating

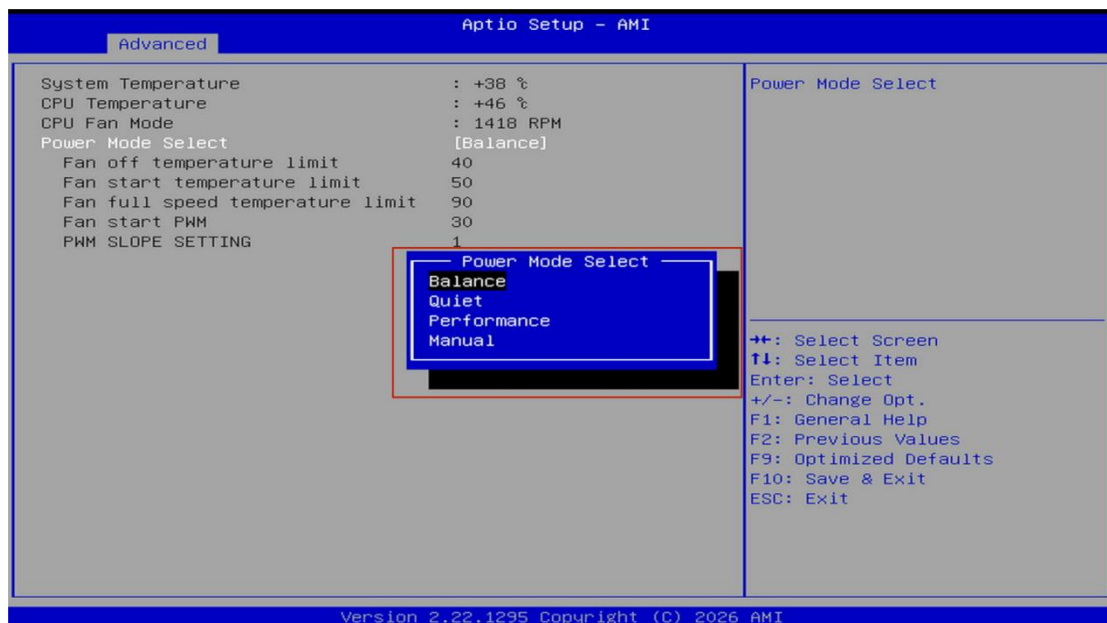
Fan Start temperature limit: The temperature threshold for the fan to start rotating

Fan Full Speed temperature limit: The temperature threshold for the fan to run at full speed

Fan Start PWM: Initial PWM duty cycle (Actual duty cycle = Set value ÷ 255 × 100%)

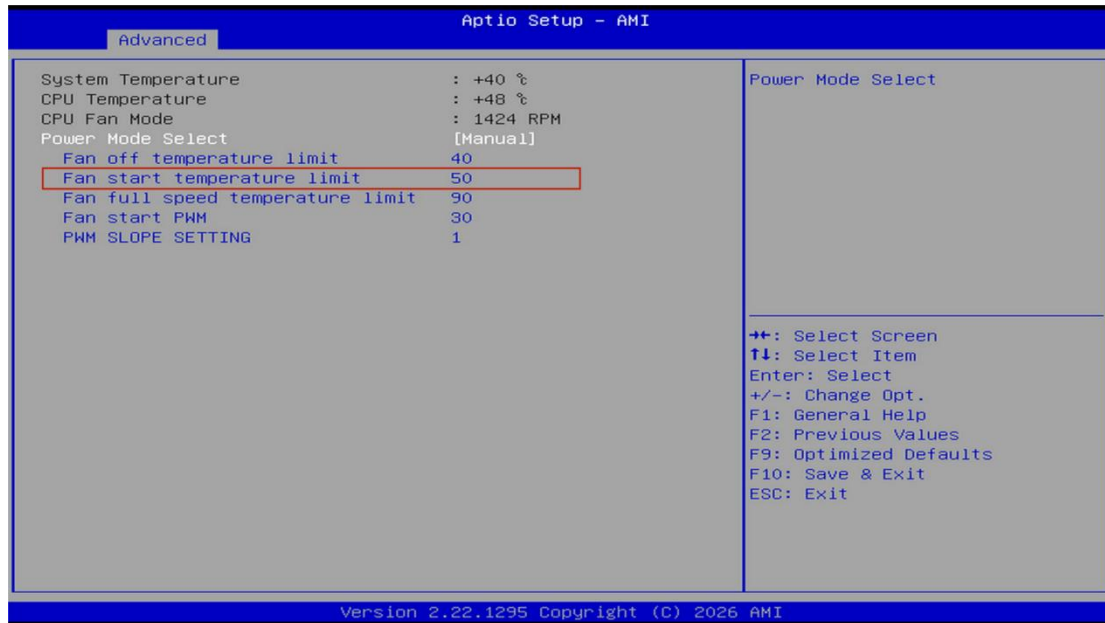
PWM SLOPE SETTING: Fan speed slope adjustment

Keyboard Keys



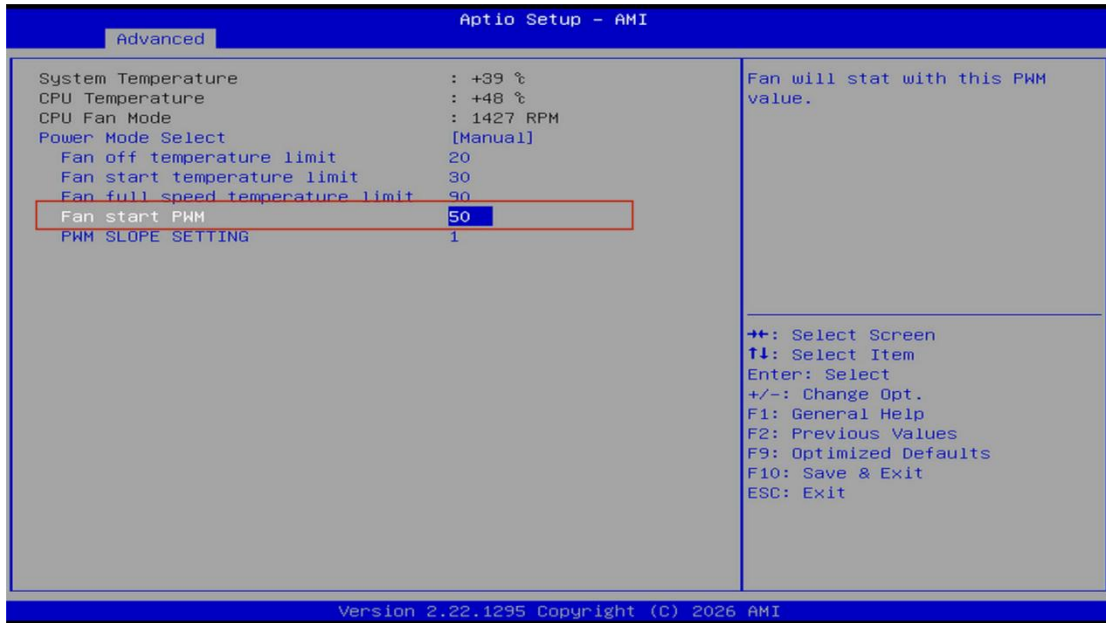
5. Modify the value of Fan Start temperature limit

You may enter a value manually, or press the Enter key and then use the "+/-" keys to adjust **Fan Start temperature limit**. The value set for this item represents the minimum starting temperature at which the fan runs at full speed. As shown below:



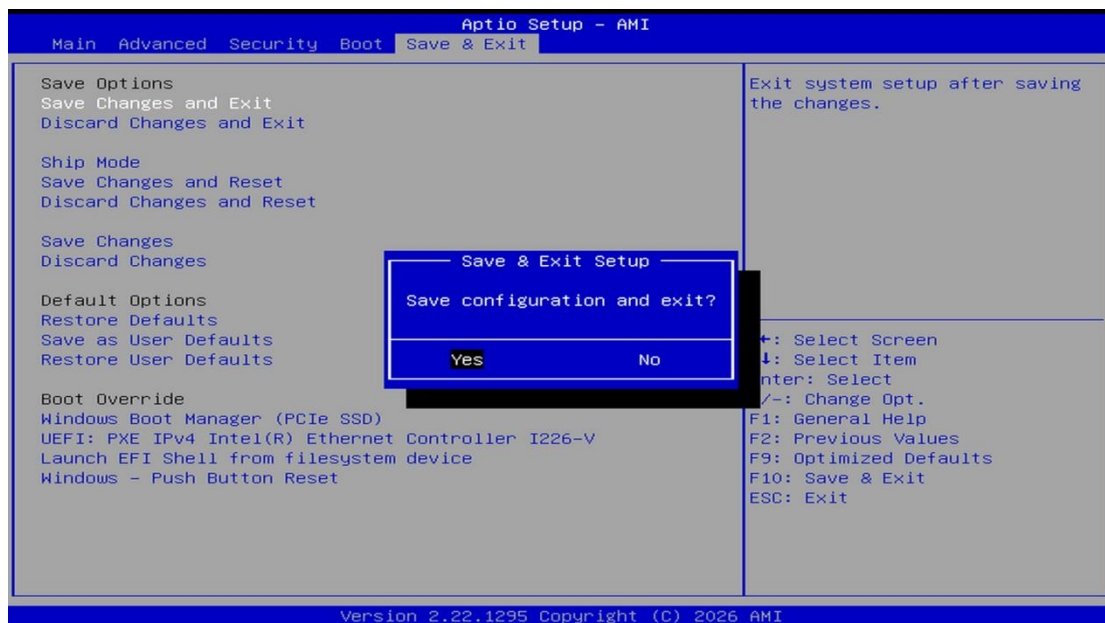
6. Modify the value of Fan Start PWM - Initial Duty Cycle (Set Value × 100%) (Not Recommended)

You can manually input values to adjust the **Fan Start PWM** item. The value set for Fan Start PWM stands for the percentage of fan rotation speed, calculated as Maximum Fan Speed × (Set Value × 100%).



7. Save the modified settings

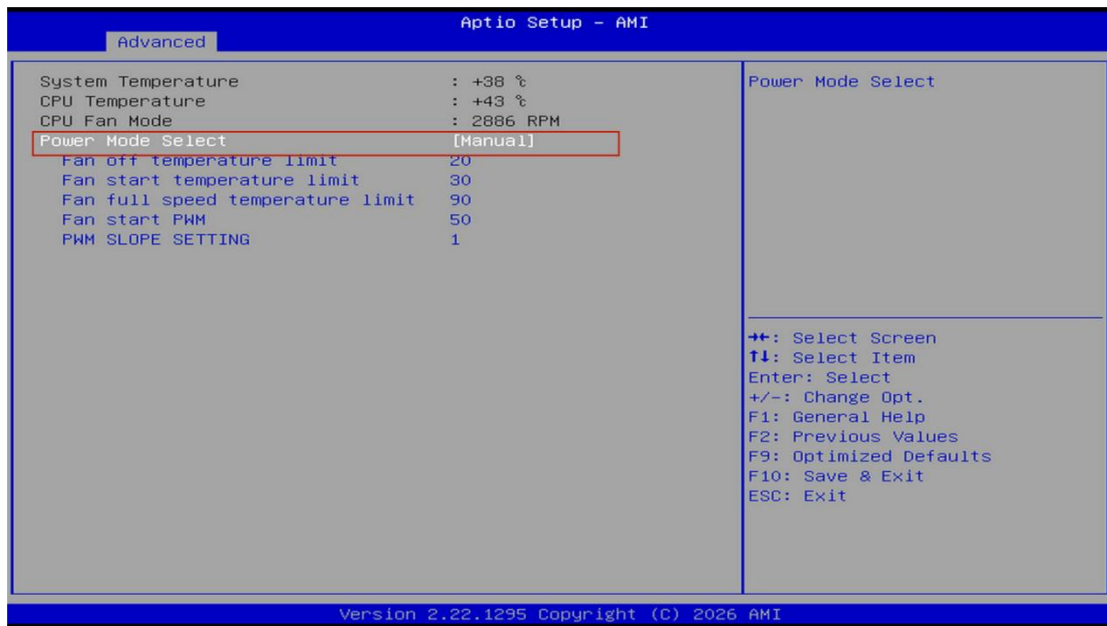
Use the right arrow key "→" on the keyboard to switch to the Save & Exit tab. Select Save Changes and Exit, then press the Enter key to save your settings and exit the BIOS interface. As shown below:





7. Verify whether the fixed fan speed settings work properly.

Press the ESC key on the keyboard to return to the Hardware Monitor page, then check if the CPU fan speed has been modified successfully. As shown below:



Complete the above operations to adjust the fan speed.